



May 16 and 21, 2013

Thank you for attending the public information open house for the proposed SR 20 Improvements from Canton to Cumming, P.I. No. 0002862, 0003681 and 0003682. In this handout package you will find a project description and location map, and a comment form.

As you enter the room, you will notice a project video and a series of displays for you to provide input on the project need and purpose, as well as the issues you experience while traveling along SR 20. Georgia Department of Transportation (GDOT) representatives, wearing nametags, are available to discuss the project development process and answer your questions. There will be no formal presentation.

We encourage you to share your thoughts on the issues along SR 20 and how to best address them. There are several ways to provide comments. All comments will be made a part of the project's official record. We hope you will take advantage of one of these opportunities to provide input.

Provide your comment today at the open house:

- Leave your written comment on a comment card, provided with this handout, and place it in the comment box.
- Leave your verbal comment with the court reporter.

Provide your comments by May 31, 2013:

- Online at www.dot.ga.gov/sr20improvements, under I-575 to SR 400 click *view website*, then click the graphic below the title Online Survey; or online at www.dot.ga.gov, click *Information Center* on the right side of the page, then click *Public Meeting Info & Handouts*; select the appropriate county from the county dropdown menu, click *Go*, and select SR 20 Canton to Cumming PIOH 5/2013.
- Mail in your comment form or a letter to Mr. Glenn Bowman, P.E., State Environmental Administrator, Georgia Department of Transportation, 600 West Peachtree Street NW, 16th Floor, Atlanta, Georgia 30308

The displays and comment forms will be available for review until May 31, 2013 at the GDOT District 1 Office located at 2505 Athens Highway, SE, Gainesville, GA and at the GDOT District 6 Office located at 500 Joe Frank Harris Parkway, Cartersville, GA. A copy of all comments received will be available for public review at these same locations and at the Atlanta address listed above.

Again, thank you for attending this open house and for providing your comments. If you should have any questions or need additional information, please contact the project manager Karyn Matthews at 404-631-1584 or via email at kmatthews@dot.ga.gov or Sam Pugh with the Office of Environmental Services at 404-631-1167 or via email at spugh@dot.ga.gov.

Sincerely,

A handwritten signature in blue ink that reads "Glenn Bowman".

Glenn Bowman, P.E.
State Environmental Administrator



Project Description and Location Map

SR 20 Improvements from Canton to Cumming

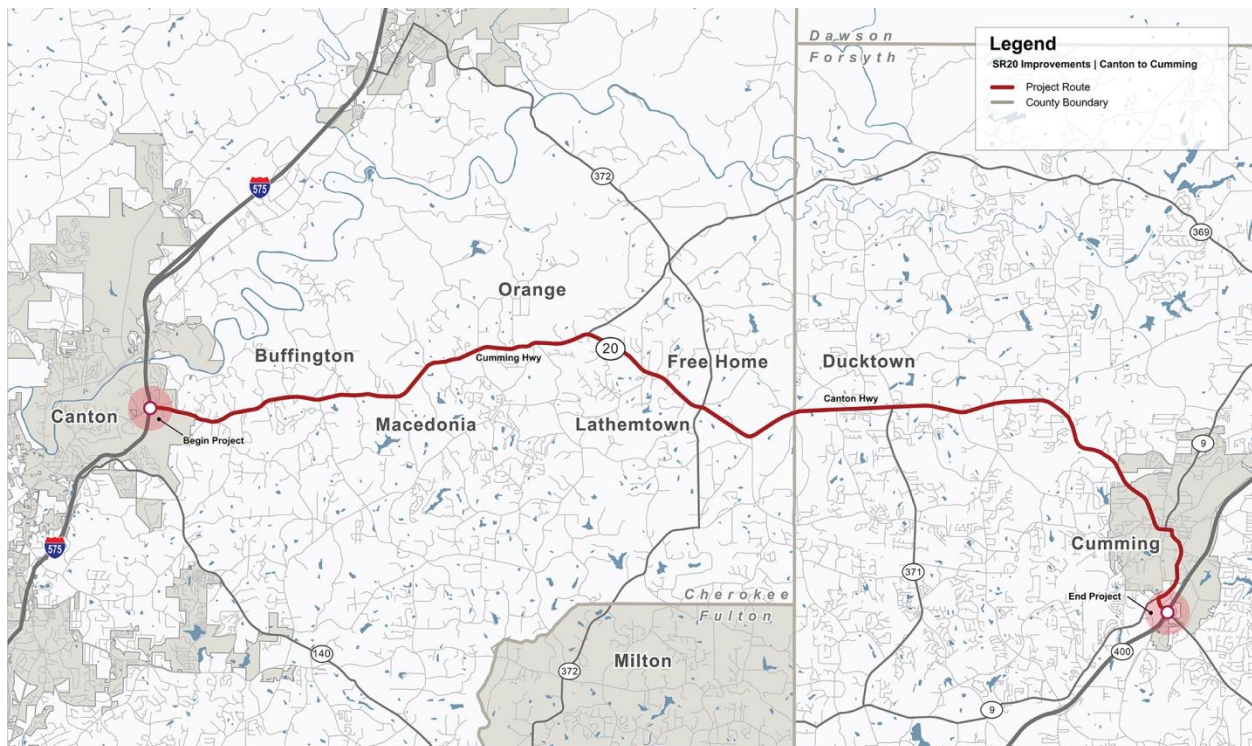
PI No's: 0003681, 0002862, 0003682

Project Description

The Georgia Department of Transportation (GDOT) is seeking to identify potential improvements along SR 20 from I-575 in Canton to SR 400 in Cumming. SR 20 is a major east-west thoroughfare on the northern edge of Metropolitan Atlanta. Residents and the commuting public experience congestion, limited mobility, and safety issues along this corridor. Improvements are needed to address the issues noted above, as well as population and employment growth, inefficient movement of goods and services, and constrained access to activity centers.

The overall project development process is an opportunity to define the existing issues and to develop context sensitive solutions that address the needs of the traveling public, while seeking to preserve the character of the community and quality of life of its residents. At this point, there are no preferred alignments or solutions. The project team is initiating the Scoping Process, which is a federally required effort for major projects, to gather input from the community on the issues and the transportation needs along the corridor, and to begin solicitation of the types of improvements that are desired.

Project Location Map





COMMENT FORM

SR 20 Improvements from Canton to Cumming

PI No's: 0003681, 0002862, 0003682

The Georgia Department of Transportation is seeking to identify potential improvements along SR 20 from I-575 in Canton to SR 400 in Cumming. In cooperation with the Federal Highway Administration (FHWA), GDOT is initiating efforts to begin the development of an environmental impact Statement (EIS) to document existing issues and appropriate solutions for the corridor. Potential solutions will seek to preserve the character of SR 20 and the quality of life for area residents, while addressing the needs of the traveling public.

To help us in identifying existing issues and needs, please provide us with your input!

Priorities! What is Important to you?

Please rank the following priorities, with 1 being your highest priority:

- | | |
|--|---|
| <input type="checkbox"/> Preserve Community Character | <input type="checkbox"/> Serve Local Trips |
| <input type="checkbox"/> Expand Bike Facilities | <input type="checkbox"/> Serve Regional Trips |
| <input type="checkbox"/> Improve Safety | <input type="checkbox"/> Improve Travel Times |
| <input type="checkbox"/> Address Access Issues | <input type="checkbox"/> Accommodate Future Development |
| <input type="checkbox"/> Provide/improve pedestrian accommodations | <input type="checkbox"/> Reduce stops |
| <input type="checkbox"/> Provide turn lanes | Other: _____ |

Please provide any comments on your priorities for the SR 20 Improvement Project:

Destinations! Where do you travel to along SR 20?

Destinations I travel to frequently include:

Safety! Where is Safety a concern along SR 20? What do you think causes the concerns?



COMMENT FORM

SR 20 Improvements from Canton to Cumming

PI No's: 0003681, 0002862, 0003682

Improvements! Where are transportation improvements needed? What types of improvements would you support or oppose?

SR 20 Travel! How do you use SR 20?

How often do you drive on SR 20 in Cherokee or Forsyth Counties?

- Daily A Few Times a Week A Few Times a Month Rarely

Why do you travel on SR 20?

- Work/School Shopping/Entertainment Access I-575
 Access GA 400 Through Travel Other _____

How did you hear about this meeting?

- Radio Newspaper Signs Word of Mouth Mailed Meeting Notice
 Other (please specify): _____

Were your questions answered by the DOT personnel?

- Yes No

Do you understand the project process after attending this open house?

- Yes No

Please share any additional comments about improving SR 20 from Canton to Cumming:

Name: _____

Address: _____

Email: _____

Email form to sr20improvements@dot.ga.gov, or mail to Mr. Glenn Bowman, P.E., Georgia Department of Transportation, 600 West Peachtree Street NW, 16th Floor, Atlanta, Georgia 30308